

**Park Directive**  
**Maryland- National Capital Park & Planning Commission**  
**Prince George’s County Department of Parks and Recreation**

**SUBJECT:** E-Bike and E-Scooter Policy for Park Trails No. PG-23-01  
**AUTHORITY:** M-NCPPC Park Rules and Regulations, Chapter I, Section 3  
**RELATED:** N/A  
**EFFECTIVE:** **Retroactive as of** February 28, 2021  
**EXPIRATION:** Permanent, but review periodically to evaluate whether revisions are necessary to keep current with technological advancements in e-bikes, and e-scooters and/or to revise the list of trails in Exhibit A

- A. On November 1, 2019, the Director of the Prince George’s County Department of Parks and Recreation issued a Park Directive establishing an E-Bike and E-Scooter Pilot Program, which Park Directive expired on August 31, 2020. The Park Directive provided for a six-month extension option.
- B. On September 21, 2020, the Director of the Prince George’s County Department of Parks and Recreation signed a six-month extension, retroactive from August 31, 2021 to February 28, 2021.
- C. On September 14, 2023, Prince George’s County Department of Parks and Recreation sought the Prince George’s County Planning Board’s approval to make the program permanent.
- D. At its meeting of September 14, 2023, the Board took no action on the proposed Park Directive, thereby authorizing the Director to promulgate this Park Directive to permanently allow e-bikes and e-scooters on designated Prince George’s County Department of Parks and Recreation property.

Accordingly, pursuant to Chapter I, Section 3, of the M-NCPPC Park Rules & Regulations (2017), the Director of the Prince George’s County Department of Parks and Recreation issues the following Park Directive:

1. *An Electric Bicycle is defined in Park Rules Chapter II, Section 1(G) as a vehicle that (1) is designed to be operated by human power with the assistance of an electric motor; (2) is equipped with fully operable pedals; (3) has two or three wheels; and (4) has a motor with a rating of 500 watts or less.*
2. *For the purposes of this Park Directive, an Electric Scooter is defined as a vehicle that (1) is designed to transport only the operator; (2) weighs less than 100 pounds; (3) has single wheels in tandem or a combination of one or two wheels at the front and rear of the vehicle; (4) is equipped with handlebars and a platform; (5) is solely powered by an battery-powered electric*

*motor and human power; and (6) is capable of operating on level ground at a speed of no greater than 20 mph.*

3. *Park Rules Chapter V, Section 14(A) prohibits the use of Electric Bicycles and unlicensed motorized scooters such as Electric Scooters on Department of Parks and Recreation property except as authorized by permit or in areas where expressly designated by Park Directive and posted accordingly.*
4. *Due to the increasing popularity and availability of Electric Bicycles and Electric Scooters, the Prince George's County Department of Parks and Recreation conducted a pilot program permitting the use of Electric Bicycles and Electric Scooters from November 1, 2019 to February 28, 2021, in order to evaluate the use of such vehicles on Prince George's County Department of Parks and Recreation property.*
5. *This Park Directive hereby authorizes the use of Electric Bicycles as defined in the Park Rules, as well as Electric Scooters as defined above, on only those hard surface trails listed in Exhibit A attached hereto and made a part hereof that are located on parkland owned or controlled by M-NCPPC in Prince George's County, Maryland.*
6. *Electric Bicycle and Electric Scooter users on M-NCPPC Prince George's County parkland must adhere to the Park Rules; and further not operate at a speed exceeding the lesser of (a) a posted trail speed limit; or (b) a speed that is reasonable and prudent under existing conditions or as directed by Park Police or other authorized person.*
7. *Except as described in this Park Directive, all other restrictions on the use of motorized vehicles on M-NCPPC Prince George's County parkland remain in effect.*

Authorized and approved as provided under the Park Rules and Regulations adopted on March 15, 2017 and effective July 1, 2017 by the Maryland-National Capital Park and Planning Commission:

**SIGNATURE:**



Bill Tyler, Director  
Prince George's County Department of Parks  
and Recreation

**DATE:** September 19, 2023

This Park Directive was published under the Public Notice section of the Agenda of the Prince George's County Planning Board for its regular meeting held on September 14, 2023.

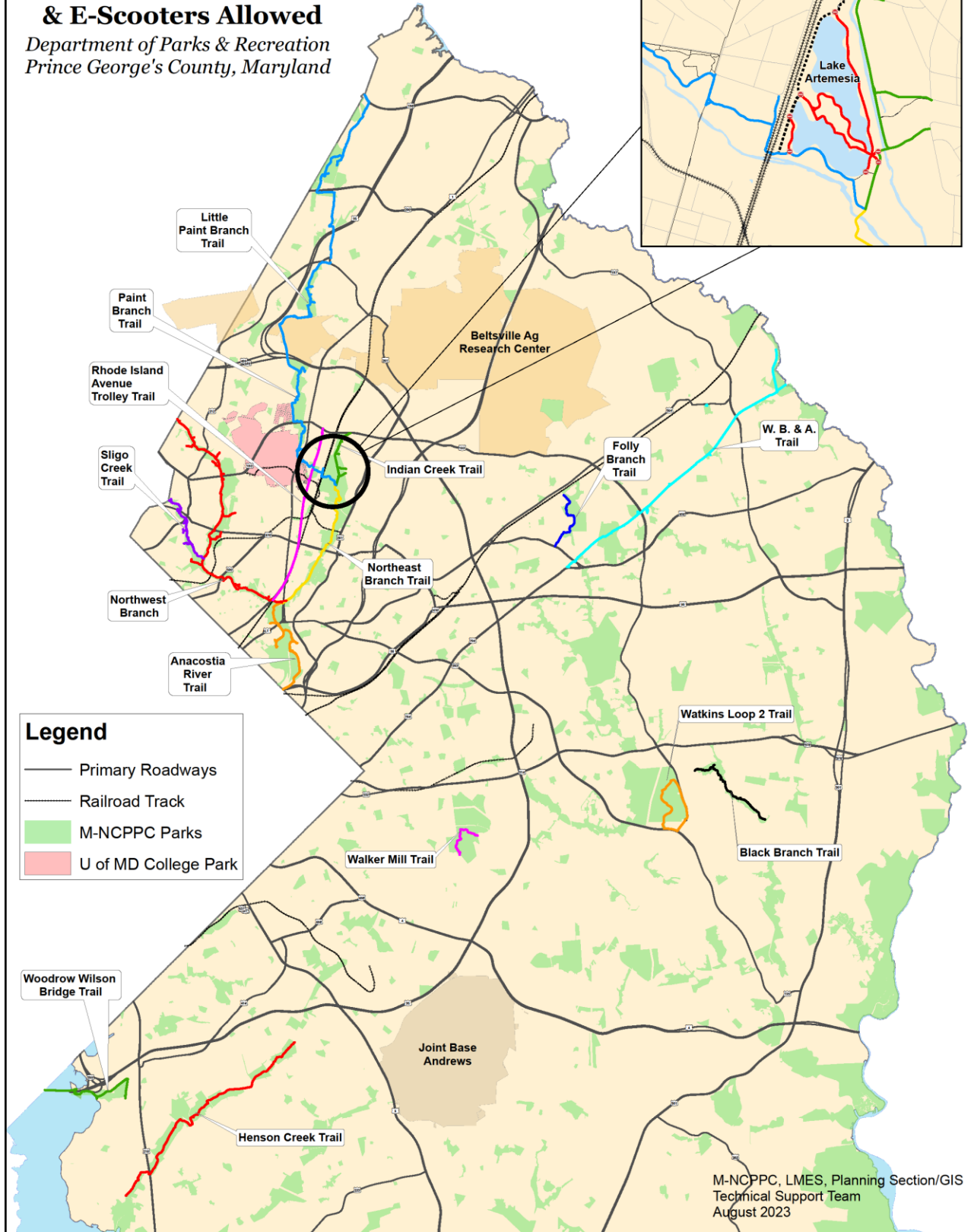
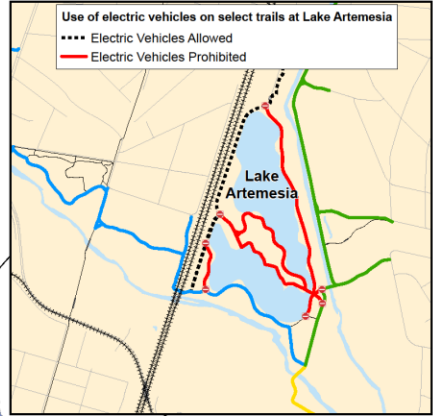
This Park Directive was published on the website of the Prince George's County Department of Parks and Recreation on October 16, 2023.

Exhibit A—Map, and List of Select, Paved, Shared Use Paths (Trails) Where Low Powered E-Bikes and E-Scooters are Allowed by Park Directive PG-23-01:

1. Anacostia River Trail
2. Indian Creek Trail
3. Paint Branch and Little Paint Branch Trails
4. Northeast Branch Trail
5. Northwest Branch Trail
6. Sligo Creek Trail
7. Rhode Island Avenue Trolley Trail
8. Henson Creek Trail
9. WB&A Rail-Trail
10. Woodrow Wilson Bridge Trail
11. Walker Mill Regional Park's Memorial Trail
12. Black Branch Trail
13. Folly Branch Trail (Section Parallel to Forbes Blvd. Only)
14. Watkins Regional Park--Loop 2 Only (See Map)
15. Select Paths at Lake Artemesia (See Inset Map)
16. All M-NCPPC-owned spur paths directly related to the above-listed trails

# Select Park Trails Low-Powered E-Bikes & E-Scooters Allowed

Department of Parks & Recreation  
Prince George's County, Maryland



- Legend**
- Primary Roadways
  - Railroad Track
  - M-NCPPC Parks
  - U of MD College Park

M-NCPPC, LMES, Planning Section/GIS  
Technical Support Team  
August 2023