

**PARK DIRECTIVE**  
**Maryland-National Capital Park and Planning Commission**  
**Prince George's County Department of Parks and Recreation**

**SUBJECT:** E-Bike and E-Scooter Pilot Program No. PG-19-\_\_

**AUTHORITY:** M-NCPPC Park Rules and Regulations, Chapter I, Section 3

**RELATED:** N/A.

**EFFECTIVE:** November 1, 2019

**EXPIRATION:** August 31, 2020

Pursuant to Chapter I, Section 3, of the M-NCPPC Park Rules & Regulations (2017), the Director of the Prince George's County Department of Parks and Recreation issues the following Park Directive:

- *An Electric Bicycle is defined in Park Rules Chapter II, Section 1(G) as a vehicle that (1) is designed to be operated by human power with the assistance of an electric motor; (2) is equipped with fully operable pedals; (3) has two or three wheels; and (4) has a motor with a rating of 500 watts or less.*
- *For the purposes of this Park Directive, an Electric Scooter is defined as a vehicle that (1) is designed to transport only the operator; (2) weighs less than 100 pounds; (3) has single wheels in tandem or a combination of one or two wheels at the front and rear of the vehicle; (4) is equipped with handlebars and a platform designed to be stood on while riding; (5) is solely powered by a battery-powered motor and human power; and (6) is capable of operating at a speed of up to 25 mph.*
- *Park Rules Chapter V, Section 14(A) prohibits the use of Electric Bicycles and Electric Scooters on Department of Parks and Recreation property except as authorized by permit or in areas where expressly designated by Park Directive and posted accordingly.*
- *To evaluate the use of Electric Bicycles and Electric Scooters on certain hard-surface hiker-biker trails on Prince George's County Department of Parks and Recreation property, this Park Directive hereby authorizes a ten-month pilot program permitting the use of Electric Bicycles as defined in the Park Rules, as well as Electric Scooters as defined above, on certain hiker-biker trails located on land devoted to park or recreation uses and owned, operated, or established otherwise by the Maryland-National Capital Park & Planning Commission in Prince George's County, Maryland ("M-NCPPC Prince George's County Parkland"). The specific trails are noted below.*
- *This pilot program shall begin on November 1, 2019 and end on August 31, 2020 with 6-month extension option.*
- *While the pilot program is effective, Electric Bicycles and Electric Scooters, as defined above, may be used in the same manner as and following the same rules as non-*

*motorized bicycles on certain hard-surface hiker-biker trails on M-NCPPC Prince George's County Parkland (see Figure. A).*

*Trails to be included in the pilot program include the following paved trails which are part of the Anacostia Tributaries Trails System (See Figure A):*

- *Paint Branch Trail from the Northeast Branch Trail to the Little Paint Branch Trail.*
- *Little Paint Branch Trail from the Paint Branch Trail to and through the Prince George's County portion of Fairland Regional Park.*
- *The Indian Creek Trail from the Northeast Branch Trail to Greenbelt Road at 57<sup>th</sup> Avenue.*
- *The Northeast Branch Trail from the Anacostia River Trail to the Indian Creek Trail/Paint Branch Trail junction near Lake Artemesia.*
- *The Northwest Branch Trail from the Anacostia River Trail to the Montgomery County Line.*
- *The Sligo Creek Trail from the Northwest Branch Trail to the Montgomery County Line.*
- *The M-NCPPC-owned sections of the Rhode Island Avenue Trolley Trail in Hyattsville, Riverdale Park and College Park.*
- *The Anacostia River Trail from the junction of the NE/NW Branch Trails to the Trail Wayside Area within Bladensburg Waterfront Park, near the Caboose Railroad Car.*
- *The Anacostia River Trail spur along the Colmar Manor Levee to Colmar Manor Community Park.*

*These trails include all paved spur trails that provide access to and from the trail system along these trail segments.*

*The following trails are explicitly excluded from use by Electric Bicycles and Electric Scooters during the pilot program period unless the Director elects to include them. As such, these trails will be signed to identify the use prohibition (See Figures B&C), and direct Electric Bicycle Users and Electric Scooter Users to appropriate parking locations.*

- *The Lake Artemesia Park Trails that circle the lake, as shown on Figure B.*
- *The Anacostia River Trail in Bladensburg Waterfront Park from the Caboose Railroad Car to the District of Columbia line at the underpass of US Route 50. The non-ART internal sidewalks and waterfront promenade within Bladensburg Waterfront Park, as shown on Figure C.*
- *Electric Scooters shall not be operated at more than 15 miles per hour on Park Trails but may be operated at not more than 25 miles per hour on Park Roads.*
- *Except as described in this Park Directive, all other restrictions on the use of motorized vehicles on M-NCPPC Prince George's County Parkland remain in effect.*

Authorized and approved as provided under the Park Rules and Regulations adopted on March 15, 2017 by The Maryland-National Capital Park and Planning Commission:

**SIGNATURE:**



\_\_\_\_\_  
Darin Conforti, Acting Director  
Prince George's County Department of Parks and Recreation

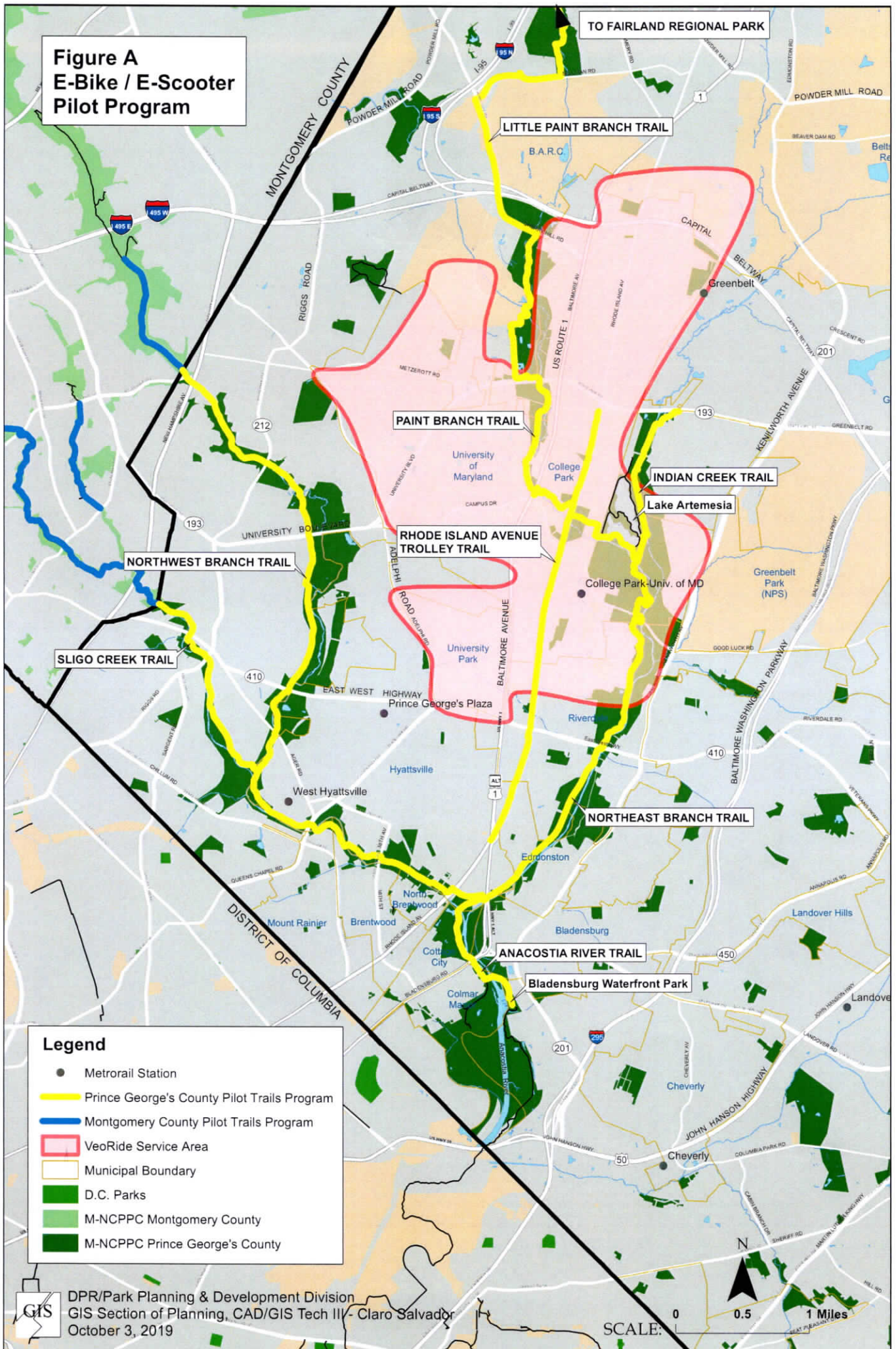
**DATE:**

OCTOBER 16, 2019

This Park Directive was published with the Agenda of the Prince George's County Planning Board for its regular meeting held on 10/31, 2019.

This Park Directive was published on the website of the Prince George's County Department of Parks on 10/21, 2019.

**Figure A  
E-Bike / E-Scooter  
Pilot Program**



**Legend**

- Metrorail Station
- Prince George's County Pilot Trails Program
- Montgomery County Pilot Trails Program
- VeoRide Service Area
- Municipal Boundary
- D.C. Parks
- M-NCPPC Montgomery County
- M-NCPPC Prince George's County



**Figure B**  
**E-Bike / E-Scooter**  
**Pilot Program**



**Legend**

- Railroad Track
- Allow Electric
- Prohibit Electric
- M-NCPPC Property

SCALE: 0 0.05 0.1 Miles

**Figure C**  
**E-Bike / E-Scooter**  
**Pilot Program**

