


Reimagining Paint Branch Golf Complex

May 13, 2021



Ask a question

If you're an attendee and want to ask a question, just:

1. Select **Q&A**  on the right side of the screen.

Note: The Q&A panel only appears if the [organizer](#) has set it up.

2. Type your question in the compose box, and then select **Send**. If you want to ask your question anonymously, select **Ask anonymously**.



Ask a question

☐ Ask anonymously

➤

Discussion Topics

- Background about the partnership
- What we hope to accomplish
- Next steps
- Q&A



Welcome!

- Senator Jim Rosapepe
- Delegate Ben Barnes
- Delegate Mary Lehman
- Delegate Joseline Peña-Melnyk
- Delegate Anne Healey
- County Council Member Dannielle Glaros
- Jerri Jones, Office County Council Member
Tom Dernoga
- County Council Member Deni Taveras
- City of College Park Mayor Patrick Wojhan
- City of College Park Representatives
 - City Council Member Denise Mitchell
 - City Council Member Maria Mackie
 - City Council Members

- University of Maryland
 - Edward J. Maginnis
- M-NCPPC, Department of Parks and Recreation, Prince George's County
 - Bill Tyler
 - Alvin McNeal
 - Bridget Stesney
 - Sonja Ewing
- College Park City-University Partnership
 - Eric Olson



Paint Branch Golf Complex

- Over 70 acres
- 9-hole, Par 3 course
- Additional facilities include:
 - Driving range
 - Club house
 - Golf Performance Center
 - Paint Branch Trail
 - Parking
 - Stormwater management facilities
- One of four courses in the M-NCPPC, PGC system



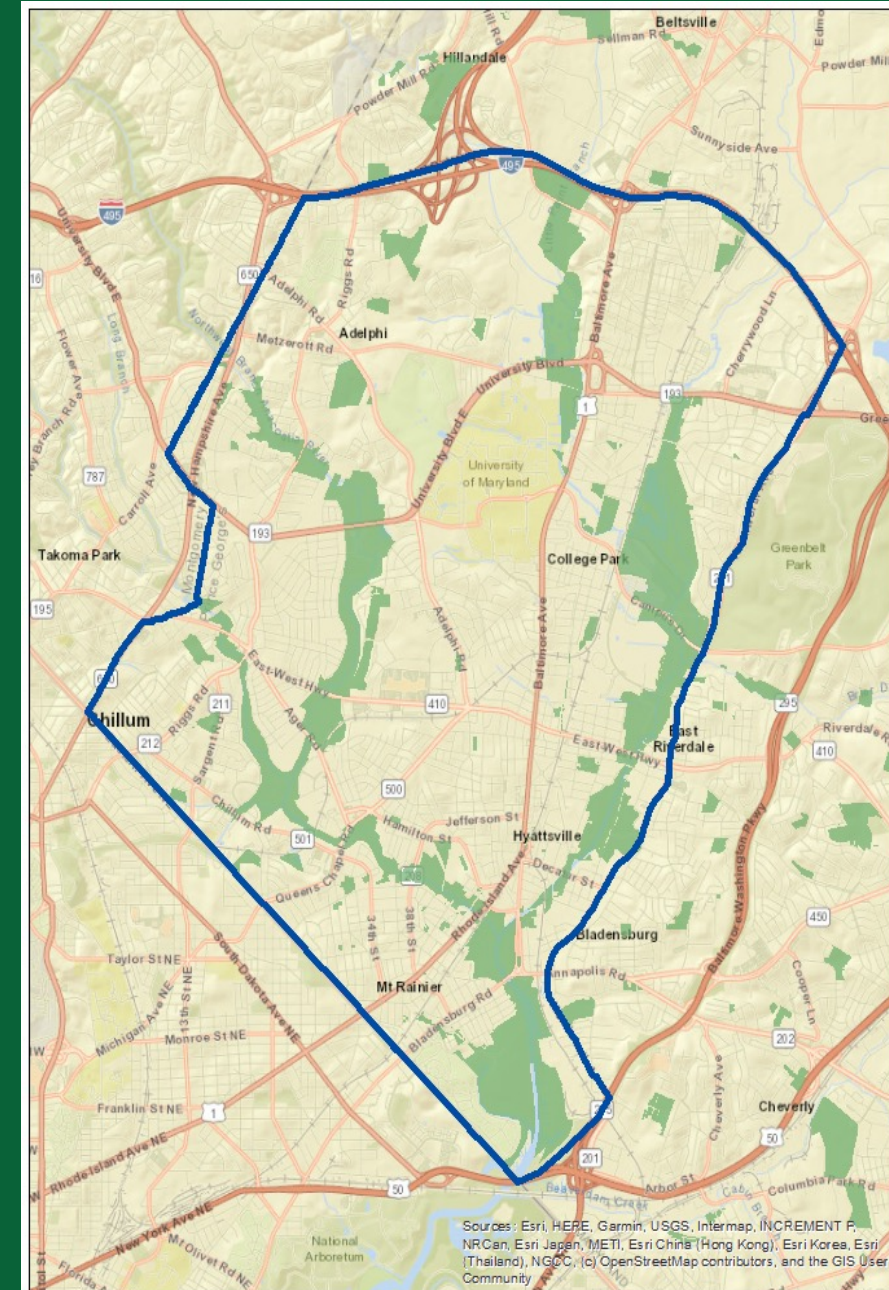
Parks + Recreation = Experience

FINDINGS:

- Low golf participation - locally and nationally
- County's Market Potential Index (MPI) is above average in all general sports except golf
- Only 5% of residents had visited a golf facility the year of the survey



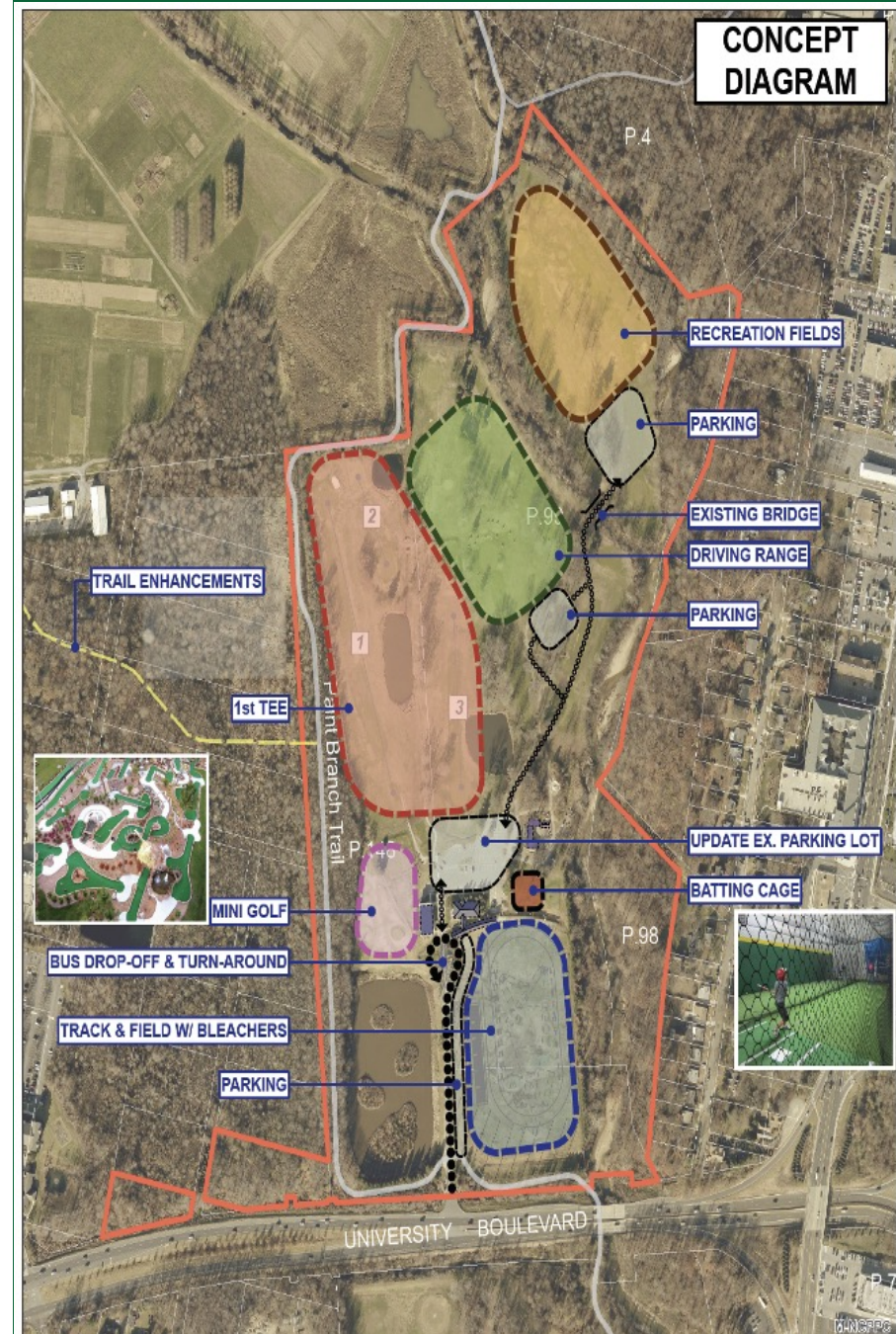
FORMULA 2040 - SERVICE AREA 2



Parks + Recreation = Experience

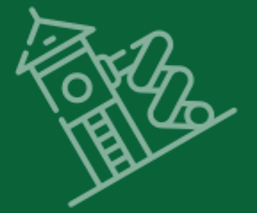
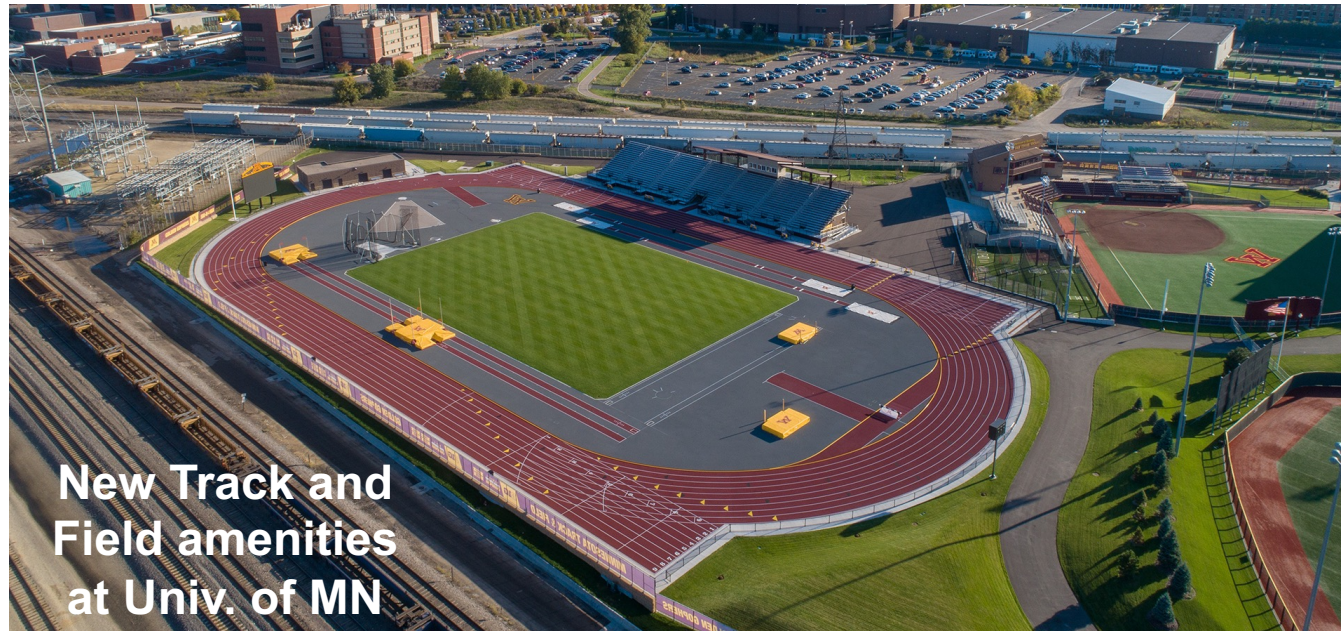
RECOMMENDATIONS:

- Create signature facilities that are family-oriented, attract users of all ages, increase and enhance the variety of user experiences
- Create amenities along the trail system
- Provide new opportunities for the Youth and Countywide Sports Division
- Meet the level of service needs for fields, trails, and specialty facilities like batting cages, pump tracks, and skate parks



Why a Track?

- Purple Line construction on campus will remove the University's "throwing fields" (javelin, shot put, discus, etc).
- The University's existing track surrounds its soccer field. The University plans to expand seating capacity at the soccer field.



Benefits of the Partnership

- **NEW** partnership model that builds a stronger, long-term relationship
- Aligns with Formula 2040 which identifies amenities needed in this area (example: fields)
- Leverage resources. Joint capital investment in new, state-of-the-art facilities, collegiate-level design
- Enhances county track and field offerings in the northern part of the county, lessening load on Sports and Learning Complex
- Co-branded track and field facilities



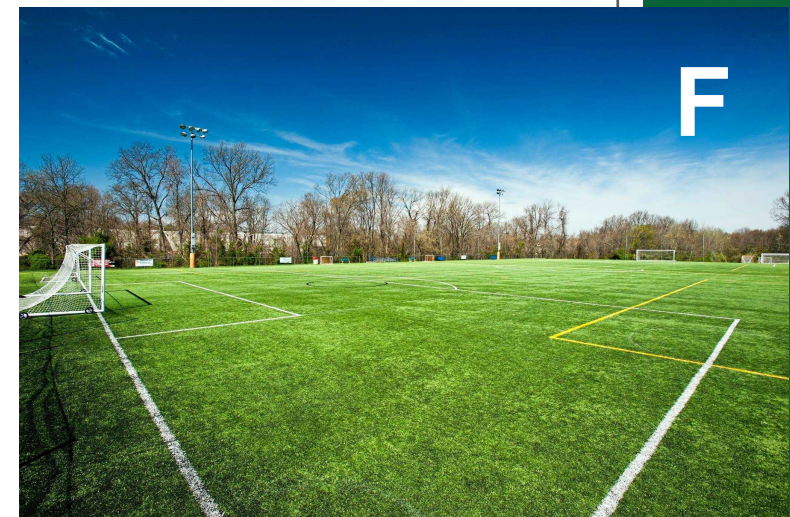
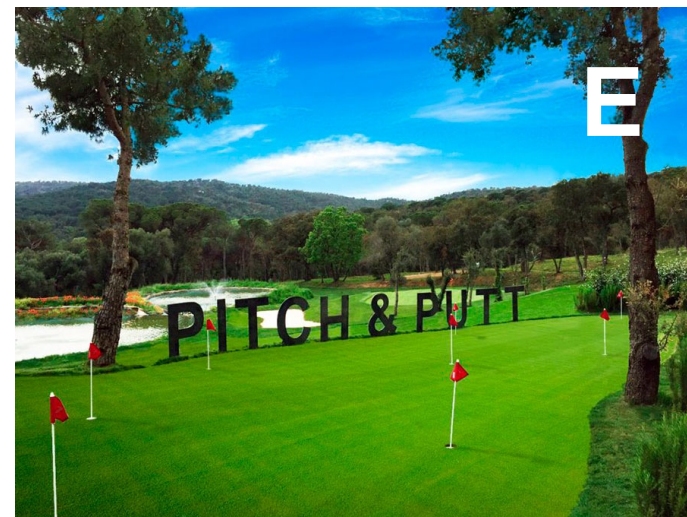
Community Benefits

- **NEW** driving range, trail improvements, additional parking
- Department operated 3-5-hole experience
- New family-oriented amenities
- New rectangular athletic fields
- Community access to Track and Field Complex when not in use by University
- Community access to UMD driving range during construction
- UMD and M-NCPPC golf and track summer camps
- Designated parking for public uses



Picture Yourself Here

What types of activities do you see you and your family participating in?



Next Steps

- Prince George's County Planning Board Status Report
– May 20, 2021
- University of Maryland Board of Regents Presentation
– June 2021
- County Council and agency approvals (Date TBD)
- Development of Track and Field facilities
 - Anticipated Fall 2023 completion
- Community Meeting on Phase 2 – Fall 2021



Discussion and Community Feedback

- For more information, please visit our website at: <http://www.pgparcs.com/5114/Paint-Branch-Golf-Complex-Development>
- Or email us at: public.affairs@pgparcs.com



Thanks for participating!

